

بِسْمِ اللّٰهِ الرَّحْمٰنِ الرَّحِیْمِ

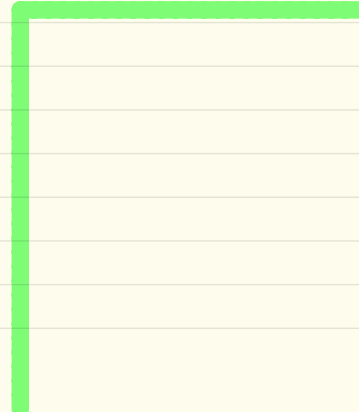
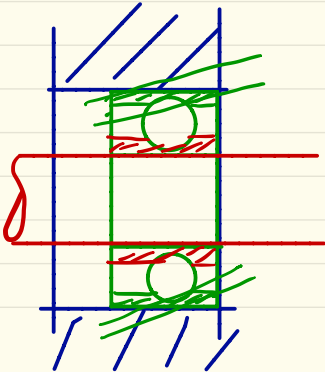
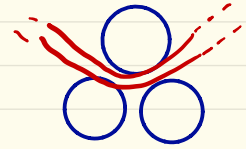
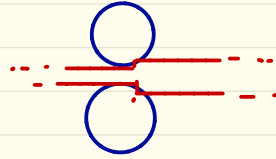
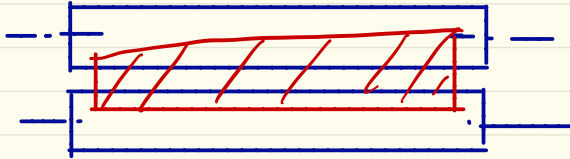
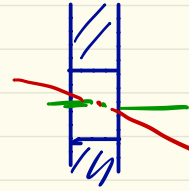
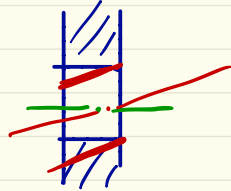
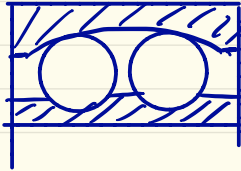
طراحی اجزاء ۳

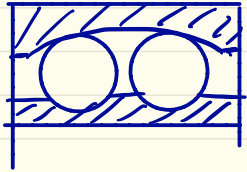
جلد ۳

۳ - بلبرینگ خودمیزبان

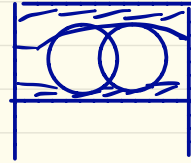
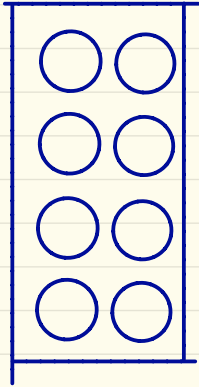
Self Align

tarahi2

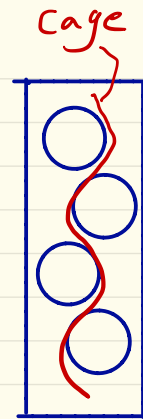




$mc = 2$

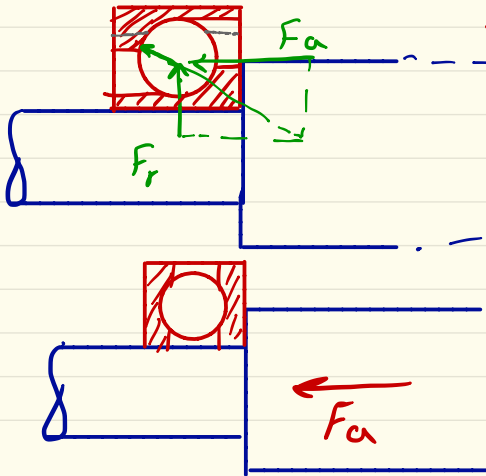


$mc = 1$

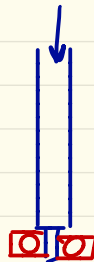


cage

۴- بلبرینگ تماسی زاویه‌ای  
Angular Contact



$mc = 7$



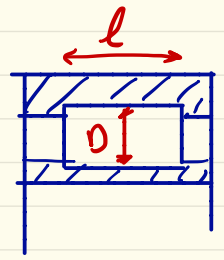
۵- بلبرینگ لغت کرد  
Thrust Ball Bearing

$mc = 51$

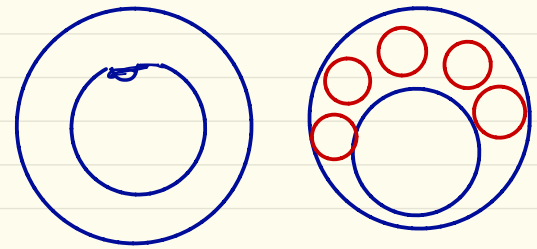
# Roller Bearing رولر بیرینگ

۱- رولر بیرینگ ساره

$$1 \leq \frac{l}{d} \leq 2$$



mc=?  $N_u, N_r, N_j, N_{up}$



## ۲- رولر بیرینگ سوزنی Middle Bearing

$$3 \leq \frac{l}{d}$$

